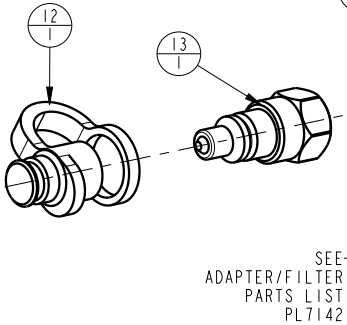
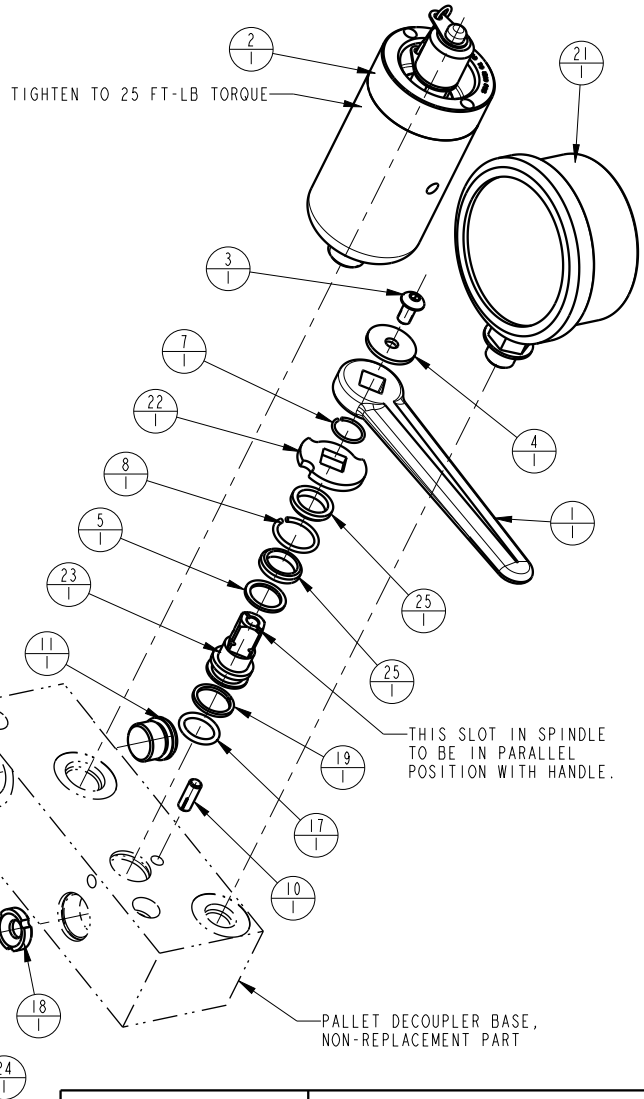



NOTE:
 1. APPLY LUBRICANT TO ALL SEALS PRIOR TO INSTALLATION.
 DO NOT USE SILICON TYPE LUBRICANTS.
 2. SET THE OVER-PRESSURE RELIEF VALVE AT 6,000 PSIG AND
 THEN INSTALL THE EXPANSION PLUG.

No.	QTY	PART No.	DESCRIPTION	Included in Repair Kit
N/A	N/A	62560000	KIT, REPAIR, PALLET DECOUPLER	
25	2	87010193	SPACER, SPINDLE, STEEL, VALVE, BALL	*
24	1	87010192	BALL, CONTROL, DIRECTIONAL	*
23	1	87010191	SPINDLE, CONTROL, VALVE, BALL	*
22	1	87010190	WASHER, LIMIT, VALVE, BALL	
21	1	72212162	GAUGE, PRESS, HYDR, 10000 PSI	
20	1	70040772	ASSY, ADAPTER/FILTER, PD, 25 MICRON	
19	1	39010042	BU RING, (-014)	*
18	2	39010040	SEAL, VALVE, BALL	*
17	1	39000037	O-RING, (-906)	*
16	1	35349089	PLUG, EXPANSION, 7/16	*
15	1	35349057	RELEASE GUIDE	
14	1	35349056	ROD, RELEASE	*
13	1	30772766	COUPLING, QD, SAE 6, MALE	
12	1	30719706	COVER, DUST, QD, SAE 6	
11	3	30601166	PLUG, SOCH, SAE 6	
10	1	23521018	PIN, GROOVE, TYPE H, 3/16, 1/2 LONG	
9	1	23350057	SPRING, COMPRESSION	
8	1	23012008	RETAINING RING, ROUND, INTL	*
7	1	23002011	RETAINING RING, ROUND, EXT	*
6	1	21440015	SHSS, OVAL POINT	
5	1	21430017	WASHER	*
4	1	21430000	WASHER	
3	1	21410004	BHCS, 10-32 x 3/8, ALY	
2	1	10101401	ASSY, ACC, 1 CU IN, 1500 PSIG	
1	1	00107000	HANDLE, VALVE, STRAIGHT	



PARTS LIST	 VEKTEK, INC. 1334 E. SIXTH AVE. P.O. BOX 625 EMPORIA, KS. 66801 U.S.A.			
	ASSEMBLIES AFFECTED	PARTS LIST, ASSY, PD, VERT, 1500 PSI		
REV	IN ACCORDANCE WITH ECN	EFFECTIVE DATE	REVISED BY	DATE
DATE: 9-16-97	DRAWING STATUS: Released			SIZE
PRODUCTION APPROVED FOR RELEASED STATUS ONLY				A
				PL5611
				REV
				J
				FORM FEG035_PL_ASIZE, REV. B

J	5822	RELEASE	JDW	10/05/25
REV	IN ACCORDANCE WITH ECN	EFFECTIVE DATE	REVISED BY	DATE
DATE: 9-16-97	DRAWING STATUS: Released			SIZE
PRODUCTION APPROVED FOR RELEASED STATUS ONLY				A
				PL5611
				REV
				J
				FORM FEG035_PL_ASIZE, REV. B